

- Sites not taken forward
- Sites agreed for further Reg 18 consultation
- Planning Permissions and under Construction



DACORUM

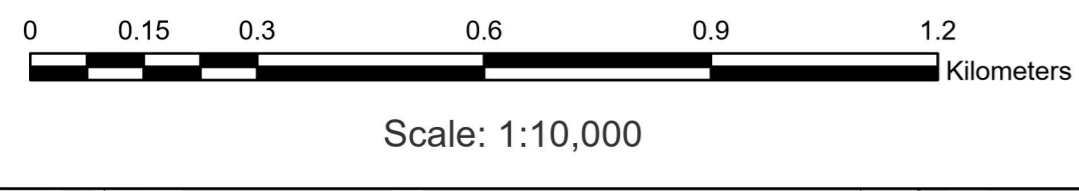
ST ALBANS

ABBOTS LANGLEY

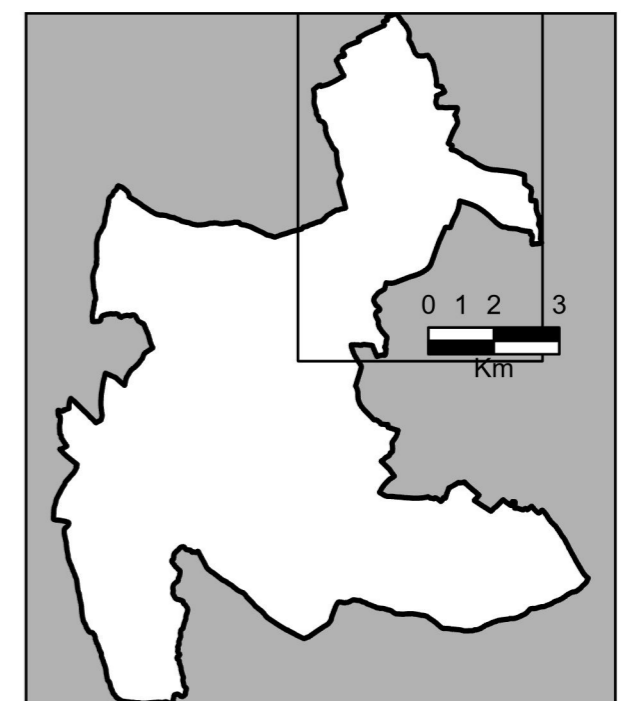
WATFORD

HERTSMERE

THREE RIVERS DISTRICT COUNCIL
 Regulation 18
 Lower Housing Growth Option
 Potential Sites
 Appendix 8



MAP COVERAGE



THREE RIVERS DISTRICT COUNCIL
 Three Rivers District Council
 Three Rivers House
 Northway
 Rickmansworth
 WD3 1RL

© Crown copyright and database rights 2023 OS
 AC0000849984. You are permitted to use this data solely to enable you to respond to, or interact with, the organisation that provided you with the data. You are not permitted to copy, sub-license, distribute or sell any of this data to third parties in any form.

